

MPAAA Fall Conference 2011

Veteran Pupil Accounting Roundtable

Presenters:

Angie Kania, Alpena Public Schools

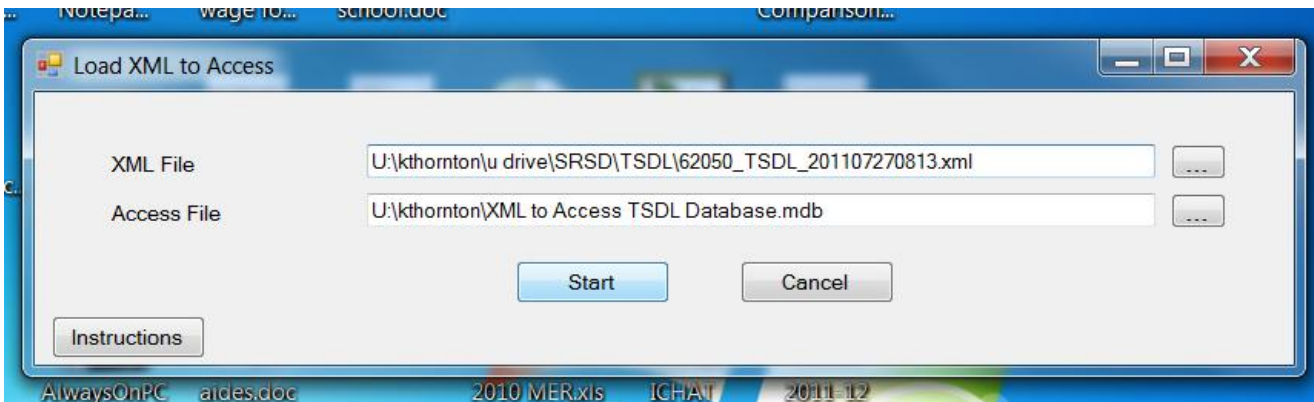
Carolyn Claerhout, Oakland Schools

Potential Roundtable Topics:

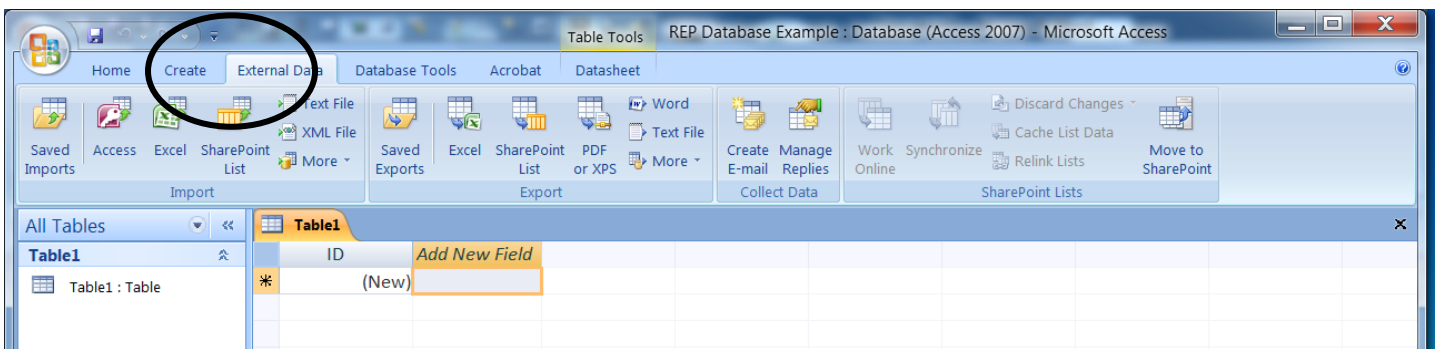
- TSDL – questions and feedback
- GAD audit October 24-December 9, 2011
- Fall Count first Wednesday in October - October 5, 2011
Combined with Special Ed Count and Supplemental Nutrition Count ;
90/10 blend for state aid payment; field audits
- Seat Time Waivers – expansion of program, issues
- Auditing Going Green

Consolidating TSDL and REP Data

Run the Load XML to Access application. Select your TSDL file and tell it where to locate the Access File. You don't have to have one created, just type in the name you want and it will create one for you.

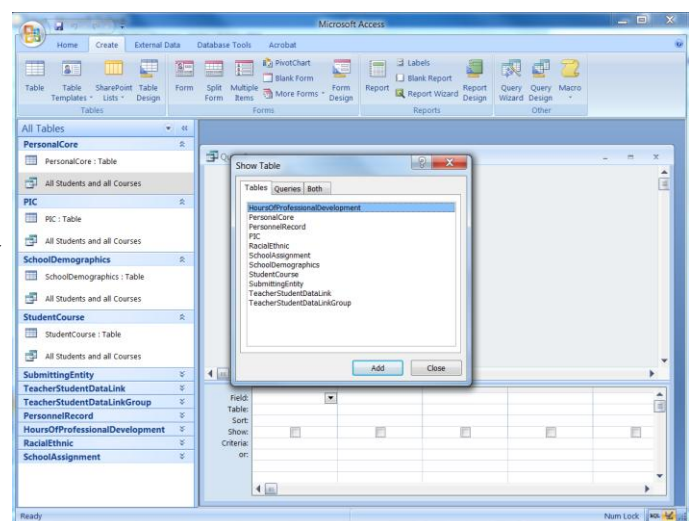
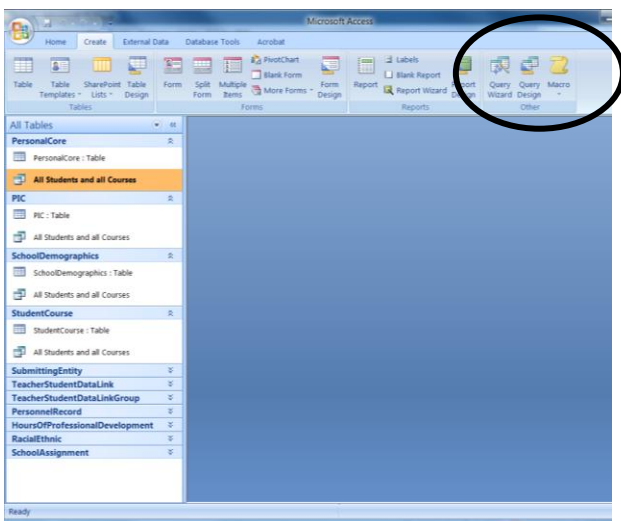


Close the Load XML to Access window and open up your newly created database. To pull in your REP data, go to the External Data tab and browse to find your REPDataFile.xml. When prompted make sure the import data and structure option is selected. Choose Okay.

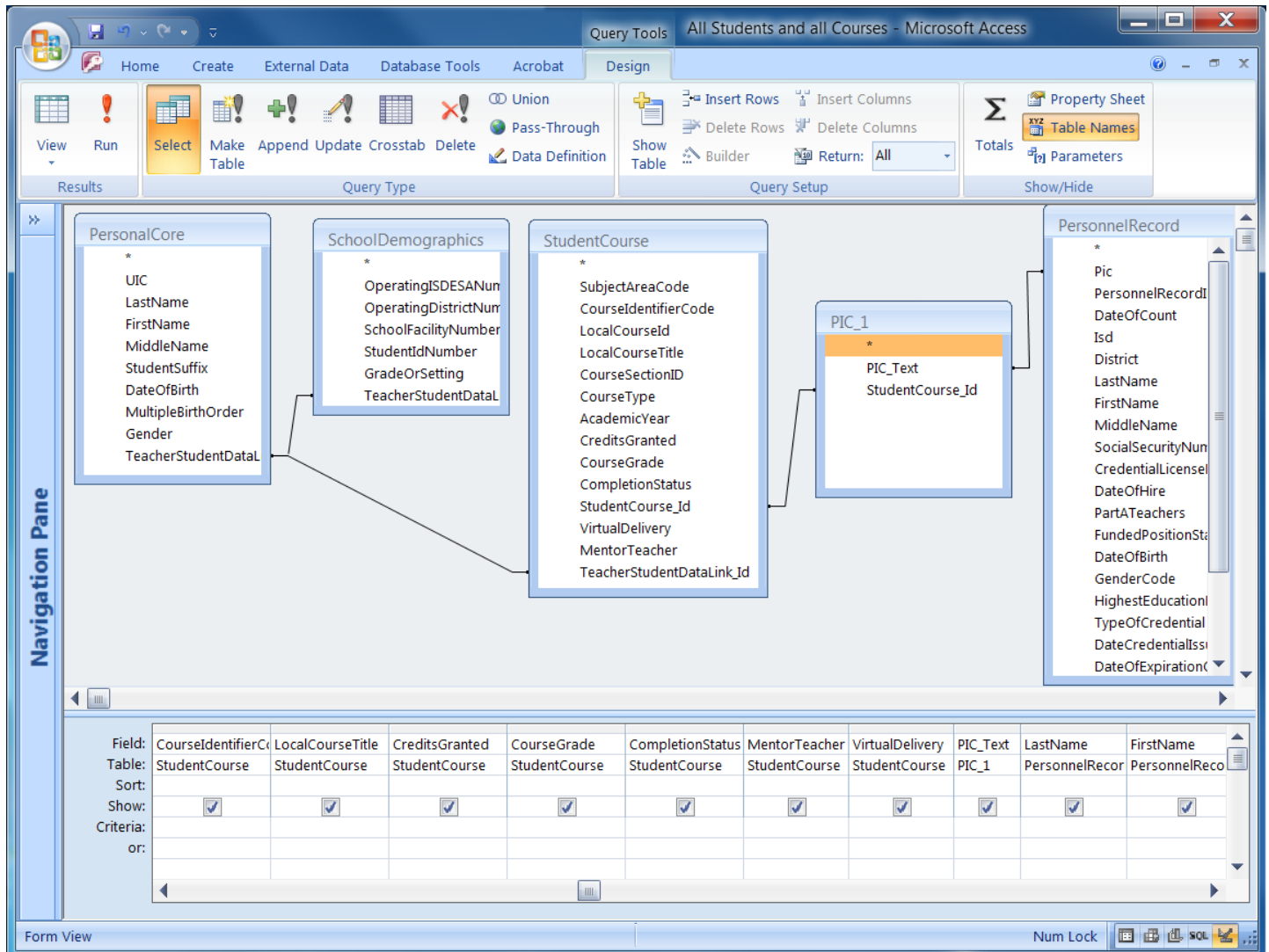


You now have a VERY LARGE file of all your TSDL data and the benefits of your teacher data from REP.

Chose the Create menu and choose Query Design. Add the appropriate tables, set your joins and add the fields you want by double-clicking them (or click and drag if you prefer!)



The query I put together lists all of the students, the classes they took, grade, completion status and whether it was virtual from TSDL and the PIC data from REP so that I could easily see my teachers by name. A picture of my query is below if you want to see the joins and fields I used. This is just the tip of the iceberg if you are adept at using Access.



I personally plan on building a query containing all of the information I need and using it as my data source with Crystal Reports to pull meaningful reports to verify/troubleshoot my data.

Kathi Thornton
 Exec. Admin. Asst.
 Grant Public Schools
 (231) 834-5621
 kthornton@grantps.net