

# First Timers Session

September 12, 2011

John Petitto, Avondale School (Ret)  
Barbette Lane, Wexford-Missaukee ISD  
Sheri Smith, Sanilac ISD

## MPAAA – UP CLOSE AND PERSONAL

History

What we do

conferences

roll-outs

Why we matter

legislation

communication

What we can do for you

A peek into the future



# Who's Who At:

MPAAA – Michigan Pupil Accounting and Attendance Association

[www.mpaaa.org](http://www.mpaaa.org)



Victoria Bott  
MPAAA Past President



Julie Beishlag  
MPAAA President



Rob Dickinson  
MPAAA President Elect

# MPAAA

MPAAA hosts a Fall Conference  
and Spring Conference


- ISD – Intermediate School District
- LEA – Local Education Agency
- PSA – Public School Academies
- GE – General Education
- SE or SpEd – Special Education
- CTE – Career Technical Education

# Who's Who At:





CEPI – Center for Education Performance  
and Information

[www.michigan.gov/cepi](http://www.michigan.gov/cepi)

1-517-335-0505 Help Desk

		
Tom Howell Director of CEPI	Trina Anderson Student Data Manager	Doris Mann K-12 MSDS Operations Manager

# Who's Who At:

		
Paul Bielawski School Data Manager (REP, SID, FID, MiSchool Data Portal)	Jim Hines MSDS Customer Support	Rachel Edmondson MSDS Customer Support
		
Mike McGroarty Longitudinal Data Manager	Cheryl Twichell UIC Analyst	Meghann Omo UIC Analyst

# CEPI Applications

- MSDS – Michigan Student Data System
- REP – Registry of Educational Personnel
  - PIC – Personal Identification Code – Teachers
- EEM – Educational Entity Master
- FID – Financial Information Database
- GAD – Graduation and Dropout
- SID – School Infrastructure Database
- Title I Supplemental Educational Services

# CEPI Applications

## MSDS – Michigan Student Data System

- Early Childhood
- Early Roster
- General Collection (Fall, Spring, EOY (end of year) Collections)
- GAD – Graduation and Dropout Review
- Request for UIC (Unique Identification Codes)
- 3WIN – Special Education Child Count
- SNE – Supplemental Nutrition
- Direct Certification Report
- TSDL – Teacher Student Data Link

# Who's Who At:

MDE – Michigan Department of Education

[www.michigan.gov/mde](http://www.michigan.gov/mde)

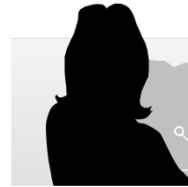
1-517-335-0505 Help Desk



Daniel Hanrahan  
State Aid and School  
Finance



Kathleen Weller  
Office of Audits



Karla Miller  
State Aid and School  
Finance  
(Picture in near future)

# MDE Reports

MDE – Michigan Department of Education

- DS4061 – Unaudited FTE Count
- DS4120 – Audited FTE Count
- DS4168b – Planned Days and Clock Hours Report
- DS4168 – Actual Days and Clock Hours Report
- Desk Audits
- Field Audits

## Audit Acronyms

- POP I – Conventional Pupils Present on Count Day
- POP II – Conventional Pupils Absent on all or part of Count Day
  - 10/30/45 Day Rule
- POP III – Non-Conventional Pupils
  - STW – Seat Time Waiver
  - SOC – Schools of Choice
  - CTE – Career and Technical Education
  - Dual – Postsecondary Enrollment (College Classes)
- FTE – Full Time Equivalency/Equated
- UIC – Unique Identification Codes – Students

## Who's Who At:

BAA – Bureau of Assessment and  
Accountability (aka: OEAA)

[www.michigan.gov/oeaa](http://www.michigan.gov/oeaa)

1-877-560-8378 Help Desk

# OEAA

## OEAA – Michigan Department of Education

- MEAP – Michigan Educational Assessment Program
- MME – Michigan Merit Exam
- ELPA – English Language Proficiency Assessment
- NAEP – National Assessment of Educational Progress
- AYP – Adequate Yearly Progress
- Education Yes!
- Michigan School Report Card
- SEEs – Shared Educational Entities

# Acronyms

- IEP – Individualized Education Program (Special Education)
- IEPC – Individualized Educational Planning Committee
- CIP – Classification of Instructional Program (CTE classes)
- GED – General Education Development Preparation
- HSC – High School Completion
- ESL – English as a Second Language
- EC – Early Childhood
- GSRP – Great Start Readiness Program (Early Childhood)
- GPGS – Great Parent Great Start (Early Childhood)
- AltEd – Adult Education or Alternative Education

## More Acronyms

- XML File Format – Extensible Markup Language
- ISS – In School Suspension
- OSS – Out of School Suspension
- USED – United States Education Department
- IDEA – Individuals with Disabilities Education Act
- PEPE – Primary Education Providing Entity
- ABE – Adult Basic Education
- NCLB – No Child Left Behind

## What Makes A Good Mentor?

- ✓ Someone with similar career experiences or positions who has mastered areas of their job, such as pupil accounting and attendance or auditing, and are willing to share their knowledge
- ✓ Someone you can comfortably ask questions without feeling intimidated or judged
- ✓ A good role model since they have learned their skills through trial and error, and want you to be successful!

## Be a great new-timer!

- ✓ Stay organized by keeping a folder on your computer desktop with the most recent Michigan Student Data System(MSDS) information:

[http://www.michigan.gov/cepi/0,1607,7-113-986\\_50502---,00.html](http://www.michigan.gov/cepi/0,1607,7-113-986_50502---,00.html)

- ✓ Make use of Ctrl f



## Be a great new-timer!

- ✓ Scan through the listserv messages and archive those that will come in handy for future reference
- ✓ The listserv is used for asking for help or responding with answers. Do not reply with "Thank you" or "I agree." These types of responses should be sent directly to the recipient's email, otherwise they load up the listserv with unwanted messages to *everyone's* email account.



## Your New-Timer Form

- ✓ Please fill out your form making sure you include your district ID#
- ✓ Your form will be given directly to a Mentor tomorrow morning during a.m. registration/breakfast.
- ✓ Your Mentor will contact you via email very soon.
- ✓ Try to keep most of your communications with your Mentor via email.

## Questions or Comments



# Contact Information

**John Petito**

[jogarp@aol.com](mailto:jogarp@aol.com)

**Barbette Lane**

231-876-2264

[blane@wmisd.org](mailto:blane@wmisd.org)

**Sheri Smith**

810-648-2200 ext. 125

[ssmith@sanilac.k12.mi.us](mailto:ssmith@sanilac.k12.mi.us)